

OUR MISSION.

Remington® is committed to the men and women serving our country in roles of distinction within the Military, Federal Agency, and Law Enforcement communities. Our mission is to provide seamless, time-sensitive support to government entities seeking our products and to develop new products that meet the needs of these customers as requirements change. We will do this by fielding a professionally trained and supported staff who are technical experts in our products and in the small arms marketplace, well educated in how to get you what you need through government acquisition processes, and responsive to your needs and desires.

REMINGTON ARMS CO., LLC
Defense Products

870 Remington Drive
P.O. Box 700
Madison, NC 27025-0700
Phone: 336-548-8899
Fax: 336-548-7800

www.remingtondefense.com

www.remingtonle.com

©2013 Remington Arms Company, LLC
RM2294



Ammunition represented in this catalog is produced by Remington Arms Co., Inc., at an ISO9001:2000 Registered Facility located in Lonoke, Arkansas. Remington firearms are manufactured to the highest quality and performance standards, providing reliability, safety, performance, durability, and long service life.



MILITARY / LAW ENFORCEMENT

MODULAR SNIPER RIFLE (MSR®)

A new level of surgical precision. Designed for operators, by operators. The Remington® Modular Sniper Rifle (MSR®) combines lethal accuracy at 1500 meters with a user-adjustable folding stock, free-float handguard, and the potential to change barrel lengths and calibers within minutes at the user level from 338 Lapua Magnum to 338 Norma Magnum to 300 Winchester Magnum to 7.62mm NATO. This patent-pending system addresses long and medium-range needs of the modern battlefield in one package designed to meet multiple emerging U.S. Armed Forces requirements. The MSR is mission-adaptable with just a change of a bolt face, barrel and magazine, and features lightweight, efficient design and optimal material selection for performance and corrosion resistance – this system truly never has to leave the battlefield.



FOLDING STOCK » The right-folding stock features a bi-directional locking mechanism to minimize the overall system profile • Length of pull is user-adjustable • Cheekpiece is adjustable for height and fore/aft position • Height of butt-plate is vertically adjustable

ACTION » TriNyte® coated components are impervious to corrosion • Receiver features titanium alloy with steel-on-steel lock-up in the barrel extension • Ambidextrous bolt release.

MAGAZINE » 5, 7, and 10 round Teflon® coated center feed single to double stack magazines for positive feeding • Removable insert to allow greater than standard overall cartridge lengths • Magazines are available in 338 Lapua Magnum (5 round and 10 round), 338 Norma Magnum (5 round and 10 round), 300 Winchester Magnum (7 round), and 7.62mm NATO (10 round)

FIRE CONTROL » The MSR® uses the same combat-proven M24 SWS trigger enhanced with the latest anti-corrosion resistant coatings and with user adjustment feature removed. The trigger is set at a pull weight of 3 to 5 lbs. +/- 8 oz.

GRIP » Any AR-style grip can be accommodated

PRIMARY RAIL » Monolithic, MIL-STD 1913 rail available in 20, 30, and 40 MOA options, allowing a variety of day/night optics to be mounted on the same plane • Integral recoil lug distributes the load from the rail and scope evenly • Optics mounting platform is compatible with HORUS reticle equipped optics, ballistic software, PDA interfaces, night vision devices and thermal imaging devices

BARREL » Available in 20", 22", 24" and 27" • Match grade, fluted to minimize weight and optimize heat dissipation without compromising stiffness

SUPPRESSOR » Customer specified suppressor and muzzle brake (AAC Titan™ recommended – eliminates 98% of muzzle flash, reduces recoil by 60%, 24.25 ounces, 9.5" long – extends 8.8" past the muzzle, 136-137 Db, POI shift <1MOA)

MODULAR HANDGUARD » Octagonal free-float tube design allows for eight planes of accessory rail mounting • Each accessory rail features integral recoil lugs to optimally distribute accessory loads during recoil • MSR features multiple sling attachment points, ventilation for rapid cooling, a unique cable management system, and a flat bottom for increased stability while firing

MSR™ Full System

- .338 LM 27" Barrel
- .300 WM 24" Barrel
- 7.62mm 20" Barrel
- Leupold® MKIV ER/T 6.5-20x50
- AAC® TITAN-QD™ Suppressor
- QD Bipod
- Hard Case w/ Custom Soft Case Insert
- Deployment Tool and Cleaning Kit

(Order #86280)

Many other options available. Contact your Remington Defense or Remington LE rep. to discuss a configuration to match the unique needs of your organization.



FOLDING STOCK » Bolt capture when folded prevents bolt loss during transport



CALIBER » Caliber is convertible in minutes at the operator level from 338 Lapua Magnum to 338 Norma Magnum to 300 Winchester Magnum to 7.62mm NATO (with a magazine block for training or field expedient use) • Other magnum calibers available upon request



UNMATCHED ADAPTABILITY



BARREL NUT» Accessible without removing the handguard, allows for barrel and caliber changes without disturbing the day optic or any mounted accessories. The supplied torque wrench ensures that barrel installation is consistent, reliable, and repeatable.



ADJUSTABLE BUTTSTOCK» Tool-free adjustment for length of pull, comb height, and recoil pad height, with locking throw levers to ensure that the settings do not change until the operator wants them to.



M2010 SNIPER WEAPON SYSTEM

Systematically eliminating all variables. The M24 is based on the legendary Model 700™ and 40-X™ rifles. Its unmatched accuracy and reliability have made it the standard in long-range tactical situations, with over 15,000 sold since 1988, and our Sniper Weapon Systems make outfitting your operation as efficient and as simple as possible. From the basic M24 Sniper System – the standard for the U.S. Army since 1988 – to the advanced M2010 configuration, we include the world-famous rifle and all the premium, service-proven components you need. Remington® was awarded the U.S. M2010 Army Enhanced Sniper Rifle (ESR) contract in September 2010 to reconfigure up to 3,600 M24 Sniper Weapon Systems after a full and open competition.



M2010 Sniper Weapon System
Order # 86442

M2010 SNIPER WEAPON SYSTEM»

Complete packages include:

- M2010 Enhanced Sniper Rifle
- Leupold MK IV ERT 6.5-20x
- AAC TiTan QD Suppressor
- System Hard Case
- Soft Case w/ Removable Mag Pouches
- Day Optic Hard Case
- Deployment Kit w/ Case
- 5 Round Magazine (x5)
- Viking Tactical Sling w/ Flush-Cup Swivels
- Cleaning Kit
- Operator Manual

M2010 SNIPER WEAPON SYSTEMS

Designed as an upgrade to the venerable M24 SWS, the M2010 comes configured with the Remington® Arms Chassis System (RACS). The M2010 gives the sniper greater capability, lethality and flexibility offered by the 300 Winchester Magnum round, a detachable box magazine, a Leupold® variable powered optic, full rail systems for mounting of ancillary equipment and signature reduction in the form of an AAC TITAN QD suppressor.



M24 SNIPER WEAPON SYSTEM » 24" 7.62 cold-hammer-forged 5R Rifling 416 stainless steel barrel • 1:11.25 twist • Composite aramid fiber-reinforced stock with aluminum bedding block • 5 round internal magazine • Leupold® Mark 4 M3 10x day optic • Steel rings and 2-piece base • Target-style iron sights • Deployment kit and hard case



M24 Sniper Weapon System
(Order #25679)



The M24 Sniper Weapon System comes complete with everything you could want in a Hardigg® hard case – Leupold® Mark 4 M3 day optic, OK Weber competition iron sights, deployment kit which includes spare parts and tools, cleaning kit, scope hard case, weapon soft case and system hard case. Includes bipod, sling and user manual.



www.remingtondefense.com

CONCEALABLE SNIPER RIFLE (CSR™)

Get in. Get out. Undetected. The Remington® Concealable Sniper Rifle (CSR™) is a compact, lightweight, and highly modular sniper weapon system designed for use by operators whose mission requires them to reach their hide, engage their target, and exfiltrate unnoticed while under direct view of the enemy and local population. The CSR can be assembled by the operator in under one minute for rapid deployment, with perfect zero retention. Just as quickly, the CSR can be disassembled down to major components all shorter than 16.5" in length, and stowed in the optional discreet carrying pack that protects the system while blending seamlessly into the environment. While on target, the CSR's IR mitigating coatings and AAC® 762-SDN-6™ suppressor ensure minimal visual and audible firing signature. For operations that never happened, in places that don't exist, the Remington CSR will help ensure that you were never there.



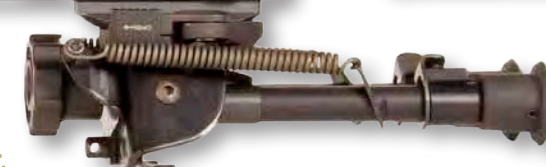
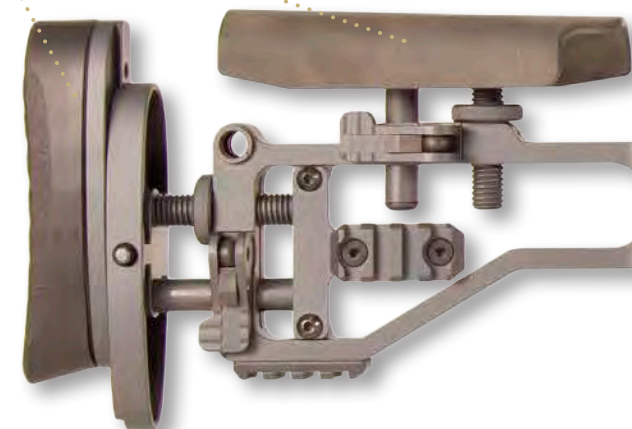
FOLDING STOCK » Using the same right-folding stock as the MSR®, it features a bi-directional locking mechanism to minimize the overall system profile • Length of pull is user-adjustable • Cheekpiece is adjustable for height and fore/aft position • Height of butt-plate is vertically adjustable

ACTION » Custom Short-Action MSR® titanium alloy action features a round bottom profile for consistent bedding, and IR-signature reducing finish.



EXTENDED TOP RAIL » Sectional MIL-STD 1913 rail allows in-line mounting of night vision and thermal devices and features an integral alignment lug to ensure consistent optic/accessory alignment after repeated disassembly and reassembly.

BARREL » 14" Hammer-Forged 5R barrel with FNC surface-conversion and 1:7" twist provides maximum service life and is optimized for precision accuracy with sub-sonic ammunition.



SUPPRESSOR » AAC® 762-SDN-6™ compact, fast-attach sound and flash suppressor mitigates firing signature and features a fully-welded all-Iconel® baffle stack and front end-cap for maximum durability. Precision coupling to the supplied muzzle brake ensures POI shift <1MOA.

FLEXIBILITY » Additional accessory rail mounting point located on the chassis allows the bipod to be mounted and the system used without the forend in place for even more rapid deployment.

HANDGUARD » Modular handguard has three planes with multiple mounting points for accessory rails allowing maximum flexibility for the operator to tailor their rifle to the mission at hand. The entire handguard assembly can be quickly detached from the rifle's chassis via a robust throw lever, allowing the bipod and any other attached accessories to remain in place for quick storage and deployment.

FIRE CONTROL » The CSR is capable of being fitted with any of the fire-controls used in the M24, M2010, and MSR, including the adjustable 2-stage X-Treme Shooting Products trigger.



DISCREET STOWAGE » With the optional discreet carrying pack, the stowed CSR will blend in to any environment. This compact bag has plenty of room to stow a weekend's worth of tourist maps, restaurant guides, and trail-mix... or one deadly sniper weapon system.



DISCREETLY
LETHAL



MODULAR DESIGN» Broken down into major components in seconds, the CSR is both concealable and maintainable in even the most remote environs, where the operator may not have the luxury of outside support.



R700™ BOLT-ACTION RIFLES

No window too narrow. When lives are at stake, precision at the moment of opportunity is everything. Precisely why Remington® rifles are the No. 1 choice in the line of duty. The world-renowned accuracy of our R700™ rifles will make you the master of any long-range tactical situation. When the safety of others rests in your hands, one of these should, too.



R700™ LTR™
TACTICAL WEAPON SYSTEM
(Order #25635)
(308 Win. caliber)

R700™

For those who can accept nothing less than perfection, there is no other choice • The R700™ is the epitome of shot-to-shot consistency and field-proven reliability • It features a receiver machined from ordnance-grade steel flawlessly bedded in your stock • Choose a heavy-contour, 26" barrel or the agile 20" fluted barrel (LTR™ only) • Both are free-floated • All rifles feature a tough, non-glare, Parkerized finish for concealment



R700™ LTR-S™
Light Tactical Rifle Suppressed
(Order #86463)
308 Win. caliber / AAC 762 SD

R700™ LTR™ (LIGHT TACTICAL RIFLE) » Legendary R700™ action • Receiver machined from ordnance-grade steel • Drilled and tapped for scope mounts • Three overlapping rings of solid steel (bolt face, barrel and receiver) • Heavy, free-floating 26" barrel (20" fluted barrel on LTR™) • Composite stock features with aircraft-grade aluminum bedding block • Non-reflective finish • Sling swivel studs • Magazine with hinged floor plate • Chambered in 223 Remington, 7mm Remington Mag., 308 Win., 300 Win. Mag. and 300 Remington Ultra Mag. • LTR™ chambered in 223 Remington, 308 Win., and 300 Remington SA Ultra Mag.

R700™ USR™ (Urban Sniper Rifle) » The USR™ is designed for the modern day operator who needs advanced capabilities to perform his mission • The USR™ is the pinnacle of R700™ tactical rifle development • It begins with the superb R700™ LTR,™ then adds essential tactical components such as a detachable box magazine, MARS rail, variable power optics, adjustable stock, muzzle brake, optional sound suppressor and bipod



R700™ USR™
Shown with optional suppressor
and Harris® bipod
(Order #86445)
(308 Win. caliber/ Full System)

R700™ LTR™ action and barrel • Fully adjustable, aramid fiber-reinforced stock with aluminum bedding block • Leupold® 3.5-10x Mark 4 M3 LR/T day scope • MOA Modular Accessory Rail System with side Picatinny rails • Badger Ordnance® steel 30mm high rings • Configured for use with a sound suppressor and optional Harris® bipod • Available as a rifle only or turn-key weapon system including all listed accessories, hard case, soft case, and deployment kit



R700™ AND MODEL R700™ LTR™ TWS (TACTICAL WEAPON SYSTEMS) »

Complete packages include:

- Leupold® 3.5-10x LR/T with range finding reticle
- Badger Ordnance® 30mm steel rings
- Badger Ordnance® steel one-piece Picatinny base
- Butler Creek® flip-up lens covers
- Harris® 1A2 bipod
- Uncle Mike's® 1" Quick-Adjust™ sling with swivels
- Pelican® hard case



Each Model 700P™ consistently shoots sub MOA from our factory (308 Win., 168 gr., 5 shots @ 100 yds.)



R4™ RIFLES AND CARBINES

The M16-type family of rifles and carbines has more than 40 years of field-proven reliability and versatility, and Remington® has more than 195 years experience providing unmatched quality and value in firearms. With the introduction of the R4™ and R16™ 5.56mm and R10™ and R11™ 7.62mm platforms; more than 5,000 different components and accessories, and a fully integrated line of Advanced Armament Corp. flash hiders, muzzle breaks and suppressors, operators now have more options than ever before. Whether the mission demands the compact portability of a personal defense weapon in 5.56mm or 9mm, the long-range power and precision of a 7.62mm semi-automatic sniper rifle, or anything in between, Remington® offers a solution that you can count on to perform every time.



THE REMINGTON® DIFFERENCE

A good barrel is the cornerstone of any rifle and no other company in the world knows more about building accurate, durable rifle barrels than Remington®. Our legacy of crafting competition winning, battle changing barrels dates back to our origins in upstate New York in 1816. Every Remington® rifle barrel is manufactured in-house on our state of the art cold hammer forging machines - the same ones that produce the venerable M24 sniper rifle barrel. Producing our own barrels gives us 100% control over quality and allows us to offer unmatched variety to suit any requirement, ranging from stainless steel to chrome-lined or FNC surface converted 4140 carbon steel.



SLING MOUNTS » Lower receiver features integrated left and right flush-cups.

FIRE CONTROL » Standard and match fire-controls available with ambidextrous selectors with optional low-profile paddles.

BOLT CARRIER GROUP » Revolutionary bolt carrier group features improved materials and coatings for reduced wear and improved reliability. Redesigned cam path and carrier weight work together for an exceptionally smooth cycle and optimum bolt velocity.

ADVANCED LOWER DESIGN » Fully-ambidextrous controls, shrouded left and right magazine release buttons, flared magazine well, and serrated front strap.

BARREL » Ultra-tough cold hammer-forged chrome-lined or FNC surface converted 4140 carbon steel barrels, with a wide selection of muzzle brakes and flash hiders.

7.62 MM PLATFORMS



- R4-E™
- » 5.56 mm
 - » 11.5" Chrome Lined Barrel
 - » SEMI-AUTO / FULL-AUTO / BURST
 - » 6 Position Tele-stock
 - » Optics Ready



- R4-C™
- » 5.56 mm
 - » 7" Chrome Lined Barrel
 - » SEMI-AUTO / FULL-AUTO / BURST
 - » 6 Position Telestock
 - » Optics Ready



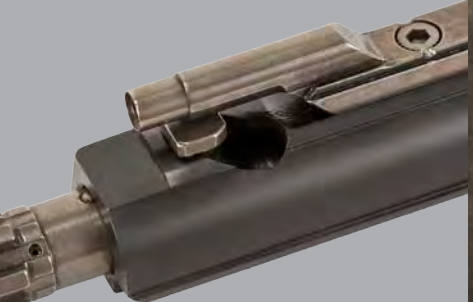
- R10-M™
- » 7.62 mm
 - » 18" Barrel
 - » SEMI-AUTO
 - » Adjustable Stock
 - » Complete System



- R11™ RSASS™
- » 7.62 mm
 - » 16" or 18" Barrel
 - » SEMI-AUTO
 - » Adjustable Stock
 - » Complete System

REMINGTON® DEFENSE ENHANCED BOLT CARRIER GROUP »

A ground-up rethinking of the common M16/M4 BCG, including improved materials, state-of-the-art coatings, and redesigned bolt lug and cam pin geometry, the Remington® Defense Enhanced Bolt Carrier Group is the single most significant upgrade for the M4-style carbine. Available in new Remington R4 Carbiners or as a drop-in component for your carbine.



The redesigned cam pin path and weighted carrier provide smoother cycling with optimized bolt velocities for reduced wear, and improved reliability.



ADAPTIVE COMBAT RIFLE (ACR®)

One rifle. Many missions. The revolutionary, fully-modular Remington® Adaptive Combat Rifle (ACR®). The ACR® was initially conceived to provide today's warfighter an American-made, reliable, accurate and mission-configurable rifle. Three American companies – MagPul® Industries Corp., Bushmaster® and Remington® – shared this common vision, and after multiple iterations of torturous testing only the strongest materials, components and concepts survived. The ACR® can change calibers from 5.56mm to 6.8mm to .300 AAC Blackout™ in minutes at the user level by changing the bolt head, barrel and magazine. The ACR® can also change barrels, stocks and accessories to go from a close-quarters battle platform to a designated marksman platform. Add a superbly reliable gas piston operating system, controllable full-auto fire capability, a non-reciprocating bolt handle, a monolithic free-floating rail system and intuitive, ambidextrous controls, and you have a platform that is a natural fit for any operator and gives him all the options he needs. Made in the USA for government sales by the oldest name in firearms and ammunition – Remington® delivers again.



BOLT ASSEMBLY » Multi-cal bolt assembly quickly and easily changes from 5.56 NATO to 6.8mm to .300 AAC BLACKOUT™

- Forward-mounted charging handle can be switched within seconds from left to right side of the upper receiver and is non-reciprocating during firing



AMBIDEXTROUS FEATURES » Ambidextrous magazine release, safety mechanism, selector lever, bolt release/hold open and charging handle

LOWER RECEIVER » Ultra-Lightweight Alloy Lower Receiver

MAGAZINE » Accepts all M16 series magazines to include MagPul® PMAG®

RAIL » Free-floating MIL-STD-1913 monolithic rail

OPERATING SYSTEM » Adjustable, piston-driven gas system. Bolt carrier is supported by hardened internal bearing rails

BARREL » Lightweight Torque Wrench or Tool-less quick change barrel system. Available in 8.25", 10.5", 14.5" and 16.5"



QD BARREL SYSTEM» Available with a quick-detach barrel system that allows operator-level changes of barrel length and caliber.



OPTIONAL FOLDING CHARGING HANDLE » The positively latching, forward-folding, ambidextrous, non-reciprocating charging handle reduces the side profile while providing additional clearance for electro optics



LIGHT-WEIGHT BARREL NUT » Redesigned barrel nut provides more rigid mounting for improved accuracy and consistent POI while allowing replacement of a complete barrel assembly with a single torque wrench in minutes.

SPECIFICATIONS - ACR® 14.5" w/ Collapsible Stock

Weight	7 lbs.
Overall Length	
Min LOP	36.4"
Max LOP	39.2"
Accuracy	Sub 2 MOA
Reliability	7,500 MRBEFF
Durability	All Parts - 2x M4 FAT Requirements



ENDURANCE TESTING » Multiple grueling endurance tests confirmed MIL-STD environmentals, barrel life, accuracy and reliability to at least



2x current U.S. Army standards for the M4 Carbine



ACR-PDW™ » Ultra-compact 19.75" length with stock folded allows unmatched concealability while optimizing barrel length at 9" for maximized energy on target out of a small package.



R5™ REMINGTON® GAS PISTON CARBINE

Built to address perceived shortfalls of currently fielded NATO systems, the R5™ is an upgrade solution to extend the lifecycle of the M-16 family for decades to come. Currently chambered in 5.56mm NATO with a hammer-forged, Melonite-converted barrel for extended life, the R5™ is a monolithic upper receiver capable of dropping in on M-4/M-16 series lower receivers without modification. Built around a supremely reliable gas piston operating system, the user can fire suppressed and unsuppressed without a regulator and realize significant durability, reliability and maintainability advantages over gas impingement offerings. The handguard offers patent-pending features common to the Remington Defense family of firearms, including cable routing guides, removable rail pieces and 45-degree offsets. The entire package is topped off by an AAC BLACKOUT™ flash hider to virtually eliminate visual signature, day or night.



ADVANCED ERGONOMICS » Ambidextrous charging handle

LOWER RECEIVER » Can integrate with any existing M4 MILSPEC lower, or be supplied complete with Remington's fully-ambidextrous lower.

MONOLITHIC TOP RAIL » Provides the most rigid mounting surface available for complex optics systems, eliminating misalignment and POI shift.

BARREL » Available in 10.5" and 14.5" medium or heavy profile • Single-tool change in less than five minutes

HANDGUARD » Free-float tube design allows for eight planes of accessory rail mounting • Features ventilation for rapid cooling, a unique cable management system and removable rail sections

10.5" (E) BARREL ASSEMBLY

14.5" BARREL ASSEMBLY

FULLY MODULAR DESIGN » The R5™ is a mission-configurable system capable of barrel change from 10.5" to 14.5" in less than five minutes with user level tools • The gas system is accessed in less than a minute without tools for ease of maintenance.

Walter McLallen- Vice Chairman of FGI Board of Directors shooting Remington® R5™ in 2012 Fallen Brethren 3-Gun Challenge.



GAS PISTON SYSTEM » The R5™ is a nonregulated gas piston system capable of suppressed and unsuppressed fire without a gas setting change and cleans easily from the front without tools • Optimized for use with the AAC RGP-SD

EASY TO CONFIGURE



Rail system » Available in five different configurations:
• Four Position
• Three Position
• Two Position
• One Position
• One Position Low Profile

EASY TO MAINTAIN



Gas block design allows disassembly and cleaning of the entire gas system without tools, and without disturbing any mounted accessory.



REMINGTON® R12 VERSA MAX™ AUTO-LOADING SHOTGUN

The Remington® R12 Versa Max™ Autoloading Tactical Shotgun ushers in a new era in combat shotguns, from America's oldest gun maker. The R12's™ self adjusting, short-stroke,dual piston gas operating system provides unmatched versatility and maximum reliability with minimal maintenance. The ability to fire all standard 12-ga. 2 ¾", and 3" loads ensures that the R12™ is always ready for any job whether it be ballistic breaching, security operations, or full scale combat. The unique operating system and revolutionary SuperCell™ recoil pad combine to produce a 12-ga. shotgun that fires magnum loads with almost 20% less recoil than a 20-ga pump. Options including rifle, bead or ghost-ring sights, 14.5" or 18" hammer-forged barrels, user-configurable forend mounted rails, and a full system of shotgun accessories, ensures that there's an R12™ to meet any need. The R12™ combines the legendary reliability, durability, and cutting-edge technology that only Remington® can deliver.



SuperCELL™ RECOIL PAD AND CHEEKPIECE » Revolutionary polymer matrix of millions of SuperCells™ spreads recoil out over a longer impulse, reducing felt recoil and discomfort from shooting heavy loads.



Oversized reversible safety button features red safety indicator band and positive audible/tactile detent. Can easily be swapped for right or left-hand operation in minutes.

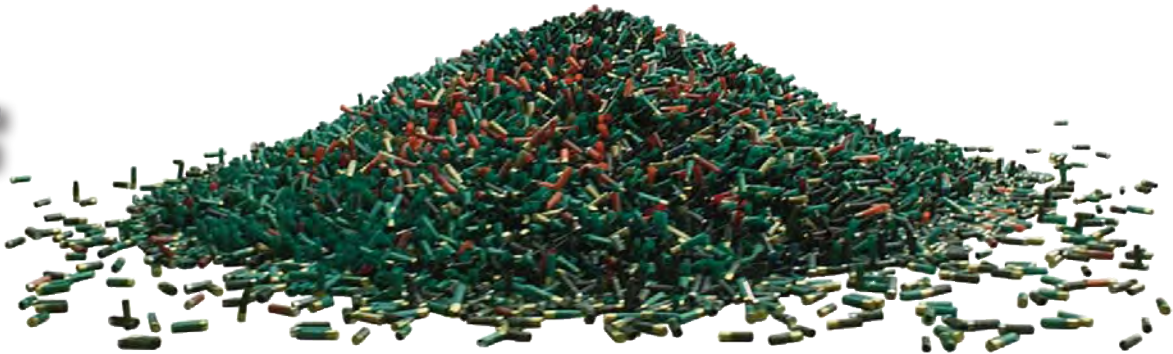
Hard coat black anodizing on the receiver, Parkerizing on the barrel, and chrome and nickel-Teflon™ internal components protect the R12™ in even the harshest environments.

User-configurable accessory rails located at the 3, 6, and 9 o'clock positions. Allows the operator to install rails in the appropriate location to accommodate their own unique combination of accessories, while leaving extra rails off to keep the weapon's profile smooth and snag-free.

Cold hammer forged from AISI 4140 steel, the 11-12™ barrel has the same properties that give the Model 870™ its legendary toughness.



Remington® R12™
14.5" Barrel, Mesa Tactical Urbino Pistol Grip Stock, Low-Profile Rifle Sights



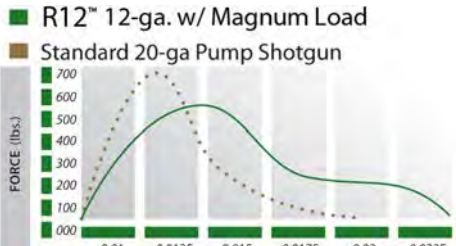
THE REMINGTON® R12™ CYCLES EVERYTHING

Length and Capacity	
18 in.	14.5 in.
6+1	5+1

Stocks	
Synthetic w/ LOP Kit	SFIV Pistol Grip 14" LOP
Mesa Tactical Urbino Pistol Grip 12" LOP	

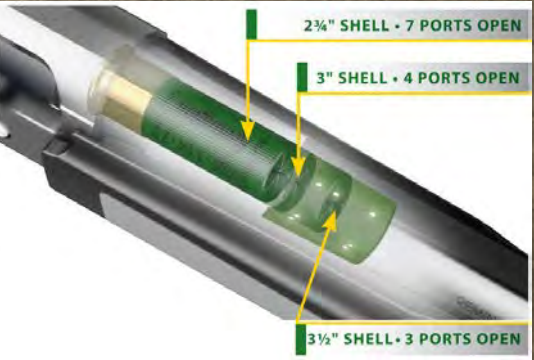
Chokes	
Fixed CYL	Fixed IC
Fixed MOD	Rem-Choke System

Sights	
Fixed Bead	Adjustable Rifle
Ghost Ring	Ghost Ring w/ Tritium



SOFTER SHOOTING

The R12's™ Versa-Port™ twin piston gas system, SuperCell™ recoil pad, and adjustable length of pull stock work together to produce the softest-shooting semi-auto shotgun available. Now, any operator can fire even the heaviest duty loads without discomfort, fire more rounds in training, and get back on their target for quicker follow-up shots. With the ability to interchangeably fire light practice and magnum duty loads, the R12™ takes the compromise out of choosing the right ammunition for getting maximum performance out of your shotgun.



VERSATILE RELIABILITY

The Versa-Port™ gas system automatically regulates the gas system pressure based on the length of the shell being fired allowing 2 ¾", 3" and 3 1/2" shells to be loaded and fired interchangeably. Torture tested with dozens of different loads from various manufacturers, the twin self-cleaning pistons are proven reliable through hundreds of rounds without cleaning.



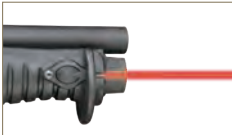
R870™ MCS™ SHOTGUN SYSTEM

Honing the leading edge. The ability to adapt to the constantly evolving urban battlefield has become a necessary trait of all government agencies. The 870™ Modular Combat System (MCS™) was built with this fact in mind. Our focus remains on building the most solid and dependable tactical weapons available today.



R870™ Modular Combat System (MCS™) » Multiple specialized tactical shotguns in one, the R870™ Modular Combat System (MCS™) is the ultimate choice for virtually any close-range scenario • Modifications are made rapidly without tools thanks to the REM™ LOC Quick-Change Stock System, truly a revolutionary design for professionals who need to adapt on the fly

Breaching shotgun with 10" barrel with cylinder choke, pistol grip only, and 4 shell capacity • Close-Quarter Combat (CQB) shotgun with 14" barrel and choke tubes, pistol grip stock, and 6 shell capacity • Shotgun with 18" barrel and choke tubes, pistol grip stock, and 7-shell capacity • Accessory rail for optics • V-Tac MK1 sling included • Comes with cleaning rod (also acts as a magazine spring guide when assembling) • Two detachable shell carriers



LED light in white or red for illuminating ballistic breach site



Multiple Shotguns In One



- MCS™ Full System
- 18" Rifle Sight Barrel w/ Choke Tubes
- 14" Bead Sight Barrel w/ Choke Tubes
- 10" Breaching Barrel
- QD Pistol Grip
- QD Buttstock
- Nylon System Case
- Tactical Sling
- Side-Saddle Shell Holder
- (Order #24973)



Model 870™ Breacher
(Order #82710)

R870™ BREACHER

The R870 Breacher System is designed to meet the needs of todays modern tactical entry personnel. Based on the durable Model 870, it is designed to fire any 12 gauge 2 ¾" and 3" load, including standard shotshell, buckshot and breaching rounds. This complete system includes a Parkerized finish, 11.5" barrel and a stand-off with rebar grooves. For efficient transition between loads, a Velcro side saddle is provided, as well as a retention holster and button sling attachment.



11.5" barrel and ported stand-off
with rebar grooves



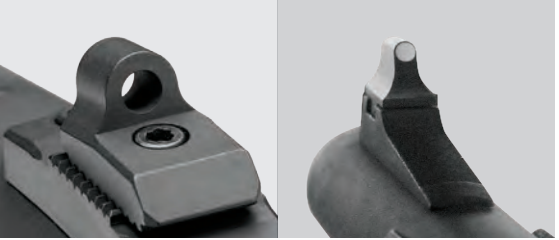
Button sling and attachment.
1 point ambidextrous bungee sling.



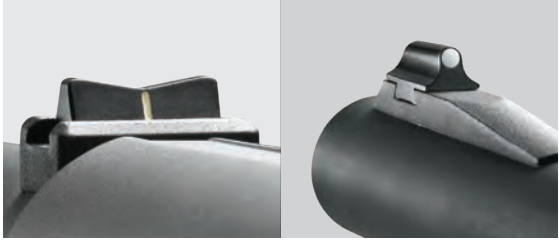
www.remingtondefense.com

R870™ PUMP-ACTION SHOTGUNS

The nation's leading defender. For a half century, the Remington® 870™ has been the pump shotgun of choice for government agencies. With over 10 million produced to date, it remains the standard by which all pump actions are measured. Its dual, non-binding action bars deliver ultra-smooth, reliable cycling. Standing the test of time, extreme conditions and duty. The ultimate pump shotgun, the 870.™



Wilson Combat Ghost Ring rear sight and XS® front sight post



Low-profile rifle sights



R870™ with Rifle sights and SpeedFeed® standard stock (Order #24417)

FEATURES »
Non-binding twin action bars provide smoothest, surest pump operation • Receiver milled from solid block of steel • 3" chambers accept all 2 ¾" and 3" 12 gauge shells • Steel-lined, grooved fore-end for a stronger grip • Breech block locks into barrel extension for strength and consistent head space • Balanced sear and inertia firing pin prevents discharge unless action is closed and trigger pulled • Flexitab™ feeding system prevents a misfeed from jamming the shotgun • Cross-bolt safety • Sling swivel studs • Optional engraved insignia and property marks available



Receivers machined from a solid, 8-lb. block of ordnance-grade steel define ruggedness.



Magazine Extension Kits



Twin Action Bars

R870™ »
Multiple barrel lengths with various chokes allow countless configurations for an ideal shotgun for duty, patrol, or entry • Parkerized finish • Multiple sight options available • Less-lethal application shotgun available with blaze orange synthetic SpeedFeed® stock and fore-end • Magazine extensions available



R870™ with Wilson Combat®/XS® Sight System, Ghost Ring sights, Knox® SpecOps™ stock, EOTech Forend Light and Parkerized finish



R870™ 14" barrel, low profile sights, Parkerized finish and tactical light fore-end



R870™ »
18" or 20" barrels • SpeedFeed® IV stock version with two magazine tubes holds 4 shells • SpeedFeed® synthetic solid stock and fore-end duplicates the weight and dimensions of factory wood stocks • Parkerized finish • Multiple sight options available • 2 shot extension available on some standard models • Cylinder, improved cylinder or modified choke

EOTECH® IFL

The new EOTech IFL (Integrated Forend Light) LED Forend Light is the first to offer an integrated LED light. The Remington-LE exclusive version puts out a blinding 200 lumens of bright, white light and offers ambidextrous pressure pads for quick engagements. Durable and dependable, the IFL will accelerate your advantage.

- FEATURES:**
- Light Output - 200 lumens »
 - Operating Temperature - -10 to +50°C »
 - Modes - Off, Constant, Momentary, Strobe »
 - Power Source - 3v Lithium (CR123) »
 - Integral hand stop »
 - Contoured, serrated grip »



Available with most 870 shotgun packages or as a separate accessory to retrofit onto your agency's 870 shotguns. Contact your Remington Law Enforcement representative for details.



www.remingtondefense.com

REMINGTON ACCESSORY CHASSIS SYSTEM (RACS) AVAILABLE TO ACCOMMODATE REMINGTON® LONG AND SHORT 700 ACTIONS

The patent-pending Remington® Accessory Chassis System (RACS) incorporates state-of-the-art operator-defined attributes such as a free-float tubular design and a fully featured front handguard section. Operator-selectable auxiliary rail section pieces in various lengths can be attached to any of the seven remaining facets of the octagonal handguard, which allows the operator to apply clip-on in-line night vision systems in addition to other ancillary systems such as lasers, bipods and other accessories. The folding RACS buttstock provides the operator with a wide variety of adjustments to allow setting the system to suit the shooter and the operating conditions.



Rapid operator adjustments of chassis system to customize the system to the user:

- Adjustable height cheekpiece with fore and aft positional adjustment
- Adjustable position recoil pad
- Adjustable length of pull stock

Folding stock

Remington® Accessory Chassis System, Long Action (RACS-LA)

20 MOA monolithic top rail ensures adequate elevation adjustment for ranges beyond 1500m while also permitting the installation of ancillary electro-optics

Cable routing guides capture wires associated with electro-optics

Recessed sling attachment points

Removable rail pieces and longer overall length free-float tube allows the user to minimize or maximize rails to configure the system to the mission

Cut-out to capture the bolt handle while folded

Accommodates any AR-type grip

Remington® Accessory Chassis System- Lightweight (RACS-LW)



- Skeletonized Buttstock w/ Full Adjustability
- Cerakote Gen II IR Signature Management in Pantone 30118
- Bolt-on Package Complete w/ Magazines and Modular Rail Sections.

SPECIFICATIONS	Long Action	Short Action
Weight	6.1 lbs.	
Overall Length		
Min LOP	36.4"	
Max LOP	39.2"	
Overall Length Folded	28.25"	
Order Number	86448	86489

Many other configurations available. Speak with your Remington® Defense or Remington Law Enforcement representative today to discuss options including different buttstocks, colors, and even IR-signature reduction coatings. We have a RACS to suit the unique needs of your organization.



RACS-LW BUTTSTOCK

All of the RACS adaptability in an ultra-lightweight package.

- »Fully adjustable for length of pull, shoulder weld, comb height and cast.
- »Quick, silent adjustments throughout the full range of travel.
- »Tool-free adjustment locking levers.
- »Multiple flush-cup sling swivel receivers.
- »Removable accessory rail sections to accept additional sling mounting points or monopod.
- »Available on any Remington® Accessory Chassis System.

REMINGTON® ACCESSORY HANDGUARD (RAHG) »

The Remington® Defense signature handguard that brought new levels of versatility to the MSR®, ACR®, R5™ and R11™ is now available in long (for 14"+ barrels) and short (for 10" barrels) lengths to fit a wide range of 5.56 and 7.62mm carbines. Each Remington® Accessory Handguard comes complete with all necessary mounting hardware, an assortment of accessory rails sections that can be positioned on any of 7 planes, integral flush-cup sling swivel receivers, and EO accessory cable routing guides.



REM® SQUEEG-E UNIVERSAL CLEANING SYSTEM RANGE BAG

Founded on the revolutionary Rem™ Squeeg-E that cleans any sized barrel in one pass without patches, saving time, money and eliminating hazardous waste, the 4 gun cleaning system is tailored to the needs of Law Enforcement Professionals.



Visit www.Squeeg-E.com for videos and more information on how Rem™ Squeeg-E works.



RANGE BAG FEATURES:

- Heavy duty, water-resistant nylon range bag with zipper closures, carry handle & shoulder strap
- Large internal compartment (10" x 6.3" x 5.5") - current configuration holds four+ boxes of ammunition (depending on caliber) or other accessories.
- 3 exterior pockets with zipper closures
- Signature Remington® Law Enforcement embroidered logo (with potential to customize/add department logos depending on volume ordered)

SYSTEM INCLUDES:

- .22/.223/5.56mm Rem™ Squeeg-E
- .308/7.62mm Rem™ Squeeg-E
- 9mm/.380/.357 Rem™ Squeeg-E
- .40/10mm Rem™ Squeeg-E
- .44/.45 Rem™ Squeeg-E
- 12GA/16GA Rem™ Squeeg-E
- (6) Matching Bronze Bore Brushes
- Large thread adapter (for shotgun brush)
- (3) Rem™ Flex Rod Cables (Rifle, Shotgun, Pistol/Revolver)
- Patented Fast Snap™ T-Handle
- Rem™ All In Bore Cleaner (0.5 fl oz)
- Rem® Oil (2.0 fl oz)
- Rem™ Action Cleaner (2.0 fl oz)
- Medium Rem™ Pad Mat (12" x 28")
- Multi tool with cleaning attachments and 10 bits
- Bolt take down tool
- Threaded Revolver Brush Adapter
- (2) Nylon and Brass Brushes
- Range Bag with Shoulder Strap
- Instruction Sheet



Also available in individual and team-level kits to keep your weapons in top-operational condition between missions.

GUN CARE ACCESSORIES



REM® OIL »

Cleans dirt and grime from exposed metal surfaces while displacing non-visible moisture from metal pores

REM® OIL WIPES »

6" x 8" wipe cloth saturated with Rem Oil • Available in: 12 Count Clampack, 100 Count Display and 60 Count Pop-up Canister (with large 7" x 8" wipes)



REM® ACTION & SHOTGUN CLEANER »

Cleans trigger groups, gas ports, choke tube threads, receivers, chambers, barrels and magazine tubes



BRITE BORE™ SOLVENT »

Dissolves carbon and powder fouling, removes copper, lead and plastic deposits



www.remingtondefense.com

PREMIER® RIFLE AMMUNITION

Duty and training rifle ammunition. Remington® produces a full line of duty and special application ammunition with superb MOA accuracy, consistent point-of-aim/point-of-impact, unbeatable reliability and superior terminal ballistics. Every cartridge combines the highest-quality brass and bullets with specially blended powders. When lives depend on your first shot, you can trust Remington Premier® rifle ammunition.



REMINGTON® PREMIER® ACCUTIP »

Precision-engineered deformation-resistant polymer tip provides match type accuracy, positive feed and function reliability, and maximum ballistic coefficient • Effectively reduces the chance of over-penetration and ricochet while maximizing energy transfer • Available in 223 Remington, 7mm Remington Mag., 308 Win., 30-06 Sprg., 300 Win. Mag. and others • Made in the USA

REMINGTON® PREMIER® CORE-LOKT® ULTRA BONDED® »

Lead core metallurgically adheres to a progressively tapered jacket, specifically designed to control expansion • Combines maximum penetration, controlled 1.8x expansion, and 95% original weight retention • Bullet maintains maximum integrity and stays on target through tough barriers • Available in 223 Remington, 308 Win., 7mm Remington Mag., 300 Win. Mag., 300 Remington Mag., 30-06 Sprg., 300 Remington SA Ultra Mag. and others • Made in the USA



REMINGTON® PREMIER® SCIROCCO BONDED® »

Most advanced polymer-tipped, boat-tailed bullet available • Sleek bullet profile produces remarkably flat trajectories • Precise jacket concentricity produces superb accuracy • Progressively tapered, heavy-based, pure copper jacket is bonded to the lead core to retain over 75% of its weight at all velocities • Available in 7mm Remington Mag., 308 Win., 30-06 Sprg., 300 Win. Mag., 300 Remington Ultra Mag. and others • Made in the USA



REMINGTON® PREMIER® MATCH »

Loaded with Sierra® MatchKing® boat-tail bullets, high-grade primers, and specially blended powders for consistent velocity and exceptional accuracy • Available in 308 Win. – 168 and 175 gr., 223 Remington – 69 and 77 gr., and 6.8mm Remington SPC – 115 gr. • Other Premier Match loads are available in 223 Remington – 62 gr. HP Match and 338 Lapua Magnum – 250 gr. Scenar Match



223 Rem 308 Match 338 Lapua



.300 AAC BLACKOUT™ »

The .300 AAC BLACKOUT™ (7.62x35mm) was designed specifically to meet the needs of U.S. Special Forces to deliver lethal energy, quietly, from suppressed carbines and precision rifles. From 0 to 300 meters, supersonic .300 AAC BLACKOUT™ offers approximately 27-35% more energy from a 9 inch barrel than 5.56mm M855 when shot from a 10 inch barrel with much less powder and resulting muzzle blast. Also available is a high-mass subsonic load for quieter use with a sound suppressor which provides 115% more energy than an MP5-SD at the muzzle and 165% more at 200 meters.

Remington® Defense offers a range of rifles including the R4™ carbine and R700™ ready to meet the needs of any operator looking for the ultimate in quiet, lethal precision.

AVAILABLE LOADS

ORDER #	DESCRIPTION
21509	220 gr. OTM - Subsonic
21503	125 gr. OTM - Supersonic
21504	125 gr. CTFB - Supersonic
23148	Primed Brass



GOLDEN SABER® BLACK BELT™
HANDGUN DUTY AMMUNITION

For over 20 years Law Enforcement professionals have trusted the performance of the Remington® Golden Saber® as a duty round that works reliably under the most extreme conditions. Introducing the next generation in performance duty rounds...the revolutionary new Remington® Golden Saber® Black Belt™. The Golden Saber® Black Belt™ includes all the performance features found in the original Golden Saber® and takes it to the next level by incorporating an hourglass shape and mechanical locking feature, we call the Mechani-Lokt™ belt. The Mechani-Lokt™ belt ensures that the jacket and core do not separate when going through the toughest barriers, such as auto glass. The new Remington® Golden Saber® Black Belt™, designed for law enforcement by the brand trusted by law enforcement for generations.

SPIRAL NOSE CUTS » Ensures reliable controlled expansion through the toughest barriers such as plywood and laminated automobile glass

MECHANI-LOKT™ BELT » Locks jacket and core together for 100% visual confidence of bullet performance

PROVEN DESIGN » Bullet designed, tested, and proven against the exhausting 8-barrier FBI ballistics test

HIGH-PERFORMANCE BRASS JACKET » Provides consistent, predictable expansion, penetration, and weight retention

HOLLOW POINT » Cavity optimized for devastating expansion and terminal performance

HOURLASS SHAPE » Mechanically locks the lead in the rear portion of the bullet to ensure jacket retention even when encountering the toughest barriers

DRIVING BAND™ » Located at the bullet's rear, the Driving Band is the larger base diameter behind the front section and results in match-grade accuracy & reduced barrel friction at maximum velocities

RELIABLE EXPANSION THROUGH
EVEN THE TOUGHEST BARRIERS



PLYWOOD



STEEL



LAMINATED AUTO GLASS



Reliable expansion, round after round,
through even the toughest barriers.

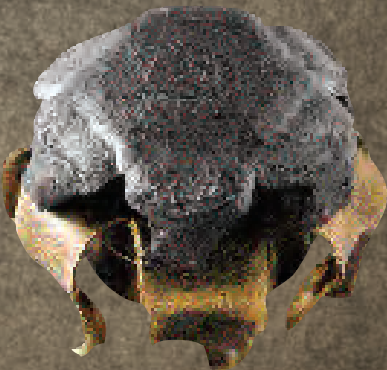


Brass jacket hollow point bullet for maximum stopping power

Mechani-Lokt™ belt locks jacket and core together for reliable terminal performance

Flash suppressed propellant for minimal muzzle flash

Primer optimized for consistent ignition and reduced muzzle flash

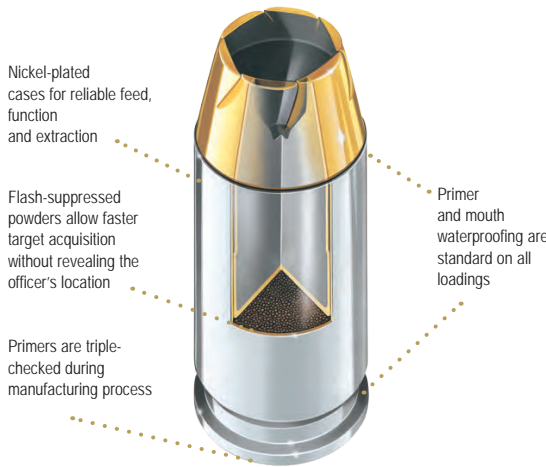


The Golden Saber® Black Belt™ bullet demonstrates controlled expansion with maximum weight retention for massive knock-down power.

Index Number		Order No.		Cartridge	Bullet Wt. (grs.)	Velocity (ft/sec)			Energy (ft/lbs)			Mid-Range Trajectory (in)	
25 rd Box	50 rd Box	25 rd Box	50 rd Box			Muzzle	25 yds	50 yds	Muzzle	25 yds	50 yds	25 yds	50 yds
GSN357MA		29402		.357 Mag	125	1220	1152	1095	413	368	333	0.2	0.8
GSN9MMB		29421		9mm Luger	124	1125	1074	1031	349	317	293	0.2	0.9
GSN9MMC	GSN9MMCB	29354	29356	9mm Luger	147	990	965	941	320	304	289	0.3	1.1
GSN9MMD	GSN9MMDB	29425	29348	9mm Luger(+P)	124	1180	1131	1089	383	352	326	0.2	0.8
GSN380B		29411		.380 Auto	102	940	920	901	200	192	184	0.3	1.4
GSN385B		29433		.38 SPL(+P)	125	975	950	929	264	250	238	0.3	1.3
	GSN357SB		29409	.357 Sig	125	1350	1245	1157	506	430	372	0.2	0.7
GSN40SWA	GSN40SWAB	29441	29367	.40 S&W	165	1150	1089	1040	485	435	396	0.2	0.9
GSN40SWB	GSN40SWBB	29443	29437	.40 S&W	180	1015	986	960	412	388	368	0.3	1.1
GSN45APA	GSN45APAB	29412	29412	.45 ACP	185	1015	981	951	423	395	371	0.3	1.1
GSN45APB	GSN45APBB	29449	29417	.45 ACP	230	875	853	833	391	372	355	0.4	1.5
GSN45APC		29451		.45 ACP (+P)	185	1140	1086	1041	534	484	445	0.2	0.9

GOLDEN SABER® HPJ (HIGH-PERFORMANCE JACKET)
HANDGUN DUTY AMMUNITION

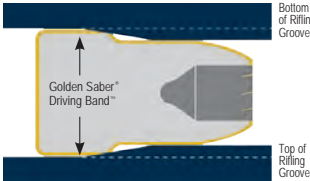
Terminal performance that cuts three ways. Golden Saber®, the ultimate in street-proven handgun rounds. Our three key design features come together on-target for rapid, controlled expansion; deep penetration; max weight retention and exceptional accuracy. Its unique hollow-point design delivers a previously unattainable level of terminal performance.



JACKET NOSE CUT » Forms a folded spiral pattern that curls one edge of each jacket petal inward, completely cutting through the lead core into the hollow point • This causes early cavity failure and starts controlled expansion, while still conserving energy for superior penetration • This design ensures positive expansion even at lower velocities

HIGH-PERFORMANCE BRASS JACKET » Made entirely of thicker and stiffer cartridge brass instead of standard copper gilding metal • Jacket petals open rapidly to form shoulders that support the mushrooming core, which creates an aggressive frontal area (at least 1.6 times the bullet diameter) over a longer distance in the wound cavity

DRIVING BAND™ » Located at the bullet's rear, the Driving Band is the larger base diameter behind the front section of bore diameter • This configuration mechanically locks core to jacket to prevent core/jacket separation and reduces rifling contact friction for optimum muzzle velocity • Also, the reduced front diameter allows the bullet to align precisely in the bore before the band engages the rifling to produce true match-grade accuracy and higher velocity conservation



GOLDEN SABER® BONDED » All the revolutionary features that make Golden Saber® rounds the leading edge in tactical handgun rounds, along with the unmatched barrier-penetration performance of our special bonded-bullet design.

The standard for barrier-penetration performance • Through exclusive Remington® process, lead core hot-bonded to brass jacket • Exceptional weight retention – up to 97% through auto glass • Reduced bullet nose diameter for precise bore alignment and match-grade accuracy • Requires less energy to initiate expansion • Jacket stiffness and wall thickness optimized to eliminate over-expansion, thus maximizing penetration • Available in 357 SIG, 9mm Luger, 40 S&W and 45 Auto • Made in the USA

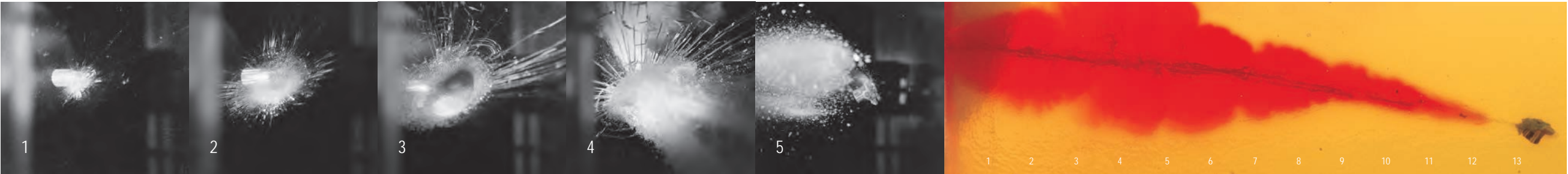
GOLDEN SABER® HPJ (HIGH-PERFORMANCE JACKET) » Industry-exclusive Driving Band™ • Jacket made entirely of cartridge brass • Nickel-plated cases for more reliable feeding • Waterproofed primers and case mouths provide max integrity in all weather conditions • Virtually 100% weight retention • Precise hollow-point cavity design maximizes penetration by minimizing lead core deformation • Flash-suppressed powders allow faster low-light target reacquisition • Reduced bullet nose diameter for precise bore alignment and match-grade accuracy • Optimum barrier penetration and expansion through a full range of accepted barrier tests • Available in 380 Auto, 9mm Luger, 38 Special, 357 Mag., 40 S&W and 45 Auto • Made in the USA



This series of photos shows the totally controlled and extremely uniform expansion of Golden Saber® HPJ bullets.

Sequence of high-speed photography showing the superior performance of Golden Saber® HPJ Bonded™ through auto glass. Shot was set up to mimic one taken from the left front quarter of a vehicle. FRAME 1: 230-gr., 45 caliber Golden Saber® Bonded™ bullet impacts typical windshield glass. FRAMES 2-4: Bullet passes through windshield. FRAME 5: Emerges from the glass intact. Jacket and core held together through ASI ¼-inch laminated safety glass.

PUNCHES THROUGH BARRIERS AND DELIVERS SUPERIOR TERMINAL PERFORMANCE BEYOND.



A block of gelatin placed 10" beyond the auto-glass setup to catch the bullet. Even after smashing through safety glass, the 45-cal. Golden Saber® Bonded™ still delivers a large-volume stretch cavity with over 12" of penetration.



9mm Luger, 147-gr.
Auto Glass @ 10"
1.5x expansion

40 S&W, 180-gr.
Auto Glass @ 10"
1.6x expansion

45 Auto, 230-gr.
Auto Glass @ 10"
1.4x expansion



Golden Saber® HPJ Bonded™
9mm Luger, 147-gr.,
25 yds. 10 Shots, .9"



www.remingtondefense.com

GOLDEN SABER® HPJ (HIGH-PERFORMANCE JACKET)
HANDGUN BARRIER TEST RESULTS

GOLDEN SABER® BONDED™

HEAVY CLOTHING @ 10 FEET



9MM LUGER
» Weight: 147-gr.
» Penetration: 16.9"
» Expansion: .58" (1.6x)
» Weight Retention: 100%



40 S&W
» Weight: 180-gr.
» Penetration: 14.4"
» Expansion: .67" (1.7x)
» Weight Retention: 100%



45 AUTO
» Weight 230-gr.
» Penetration: 16.1"
» Expansion: .71" (1.6x)
» Weight Retention: 100%

AUTO GLASS @ 10 FEET



9MM LUGER
» Weight: 147-gr.
» Penetration: 12.1"
» Expansion: .60" (1.7x)
» Weight Retention: 92%



40 S&W
» Weight: 180-gr.
» Penetration: 11.2"
» Expansion: .62" (1.6x)
» Weight Retention: 97%



45 AUTO
» Weight 230-gr.
» Penetration: 12.5"
» Expansion: .63" (1.4x)
» Weight Retention: 96%

WALLBOARD @ 10 FEET



9MM LUGER (Wallboard)
» Weight: 147-gr.
» Penetration: 13.8"
» Expansion: .60" (1.7x)
» Weight Retention: 100%

STEEL @ 10 FEET



9MM LUGER (Steel)
» Weight: 147-gr.
» Penetration: 21.4"
» Expansion: .42" (1.2x)
» Weight Retention: 100%

GOLDEN SABER® HPJ (HIGH-PERFORMANCE JACKET)

HEAVY CLOTHING @ 10 FEET



357 MAGNUM
» Weight: 125-gr.
» Penetration: 15.7"
» Expansion: .59" (1.7x)
» Weight Retention: 100%



9MM LUGER
» Weight: 124-gr.
» Penetration: 11.9"
» Expansion: .62" (1.8x)
» Weight Retention: 99.9%



40 S&W
» Weight: 180-gr.
» Penetration: 13.0"
» Expansion: .68" (1.7x)
» Weight Retention: 99.9%



45 AUTO
» Weight 230-gr.
» Penetration: 18.8"
» Expansion: .73" (1.6x)
» Weight Retention: 99.8%

HEAVY CLOTHING @ 20 YARDS



9MM LUGER
» Weight: 147-gr.
» Penetration: 13.2"
» Expansion: .66" (1.9x)
» Weight Retention: 100%

WALLBOARD @ 10 FEET



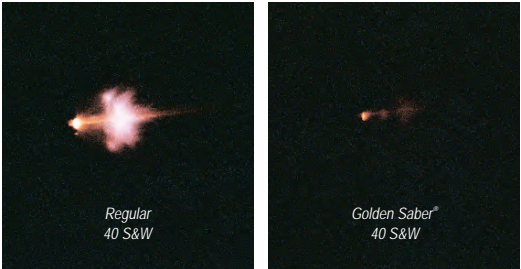
45 AUTO
» Weight 230-gr.
» Penetration: 15.3"
» Expansion: .72" (1.6x)
» Weight Retention: 99.7%

STEEL @ 10 FEET



40 S&W
» Weight 180-gr.
» Penetration: 16.3"
» Expansion: .51" (1.3x)
» Weight Retention: 99.7%

BALLISTIC PERFORMANCE
40 S&W 165-GR.
GOLDEN SABER® HPJ
MUZZLE FLASH COMPARISON



All Golden Saber® powders are treated with a chemical flash suppressant that retards flame propagation. This minimizes night blindness for the shooter while helping to conceal location.

GOLDEN SABER® BONDED

9mm Luger	Index Number – GSB9MMD	RAMAC – 29351
Primer	1 ½	
Load	9mm Luger +P	
Bullet Weight/Style	124-gr. BJHP-Bonded	
Jacket Material	Brass (Copper alloy 260)	
Core Material	100% Lead	
Muzzle Velocity	1180 fps using a 4" SAAMI standard test barrel	
Muzzle Energy	384 ft.-lbs.	
Accuracy	2.0" Max. avg. extreme spread @ 25 yards (Three 5 round groups using a universal receiver test system)	
Bullet Performance	4" pistol, auto glass @ 10 ft., average values Penetration: 11.3 inches Expansion: .54 inch dia. (1.7x) Weight Retention: 90%	

9mm Luger	Index Number – GSB9MMC	RAMAC – 29353
Primer	1 ½	
Load	Standard	
Bullet Weight/Style	147-gr. BJHP-Bonded	
Jacket Material	Brass (Copper alloy 260)	
Core Material	100% Lead	
Muzzle Velocity	990 fps using a 4" SAAMI standard test barrel	
Muzzle Energy	320 ft.-lbs.	
Accuracy	2.0" Max. avg. extreme spread @ 25 yards (Three 5 round groups using a universal receiver test system)	
Bullet Performance	4" pistol, auto glass @ 10 ft., average values Penetration: 11.3 inches Expansion: .54 inch dia. (1.7x) Weight Retention: 90%	

357 Sig	Index Number – GSB357SB	RAMAC – 29408
Primer	5 ½	
Load	Standard	
Bullet Weight/Style	125-gr. BJHP-Bonded	
Jacket Material	Brass (Copper alloy 260)	
Core Material	99.25% Lead, .75% Antimony	
Muzzle Velocity	1350 fps using a 4" SAAMI standard test barrel	
Muzzle Energy	506 ft.-lbs.	
Accuracy	2.0" Max. avg. extreme spread @ 25 yards (Three 5 round groups using a universal receiver test system)	
Bullet Performance	4" pistol, auto glass @ 10 ft., average values Penetration: 12.3 inches Expansion: .58 inch dia. (1.6x) Weight Retention: 82%	

40 S&W	Index Number – GSB40SWA	RAMAC – 29366
Primer	5 ½	
Load	Standard	
Bullet Weight/Style	165-gr. BJHP-Bonded	
Jacket Material	Brass (Copper alloy 260)	
Core Material	100% Lead	
Muzzle Velocity	1150 fps using a 4" SAAMI standard test barrel	
Muzzle Energy	485 ft.-lbs.	
Accuracy	2.0" Max. avg. extreme spread @ 25 yards (Three 5 round groups using a universal receiver test system)	
Bullet Performance	4" pistol, auto glass @ 10 ft., average values Penetration: 11.4 inches Expansion: .71 inch dia. (1.8x) Weight Retention: 92%	

40 S&W	Index Number – GSB40SWB	RAMAC – 29436
Primer	5 ½	
Load	Standard	
Bullet Weight/Style	180-gr. BJHP-Bonded	
Jacket Material	Brass (Copper alloy 260)	
Core Material	99.25% Lead, .75% Antimony	
Muzzle Velocity	1015 fps using a 4" SAAMI standard test barrel	
Muzzle Energy	412 ft.-lbs.	
Accuracy	2.0" Max. avg. extreme spread @ 25 yards (Three 5 round groups using a universal receiver test system)	
Bullet Performance	4" pistol, auto glass @ 10 ft., average values Penetration: 11.2 inches Expansion: .62 inch dia. (1.7x) Weight Retention: 97%	

45 AUTO	Index Number – GSB45APB	RAMAC – 29416
Primer	2 ½	
Load	Standard	
Bullet Weight/Style	230-gr. BJHP-Bonded	
Jacket Material	Brass (Copper alloy 260)	
Core Material	100% Lead	
Muzzle Velocity	875 fps using a 5" SAAMI standard test barrel	
Muzzle Energy	391 ft.-lbs.	
Accuracy	2.8" Max. avg. extreme spread @ 50 yards (Three 5 round groups using a universal receiver test system)	
Bullet Performance	5" pistol, auto glass @ 10 ft., average values Penetration: 12.5 inches Expansion: .63 inch dia. (1.4x) Weight Retention: 96%	

45 AUTO	Index Number – GSB45APA	RAMAC – 29414
Primer	2 ½	
Load	Standard	
Bullet Weight/Style	185-gr. BJHP-Bonded	
Jacket Material	Brass (Copper alloy 260)	
Core Material	100% Lead	
Muzzle Velocity	1015 fps using a 5" SAAMI standard test barrel	
Muzzle Energy	534 ft.-lbs.	
Accuracy	2.8" Max. avg. extreme spread @ 25 yards (Three 5 round groups using a universal receiver test system)	
Bullet Performance	4" pistol, auto glass @ 10 ft., average values Penetration: 12.1 inches Expansion: .65 inch dia. (1.4x) Weight Retention: 94%	

GOLDEN SABER® HPJ (HIGH-PERFORMANCE JACKET)

9mm Luger	Index Number – GS9MMD	RAMAC – 29422
Primer	1 ½	
Load	Standard	
Bullet Weight/Style	147-gr. BJHP	
Jacket Material	Brass (Copper alloy 260)	
Core Material	100% Lead	
Muzzle Velocity	990 fps using a 4" SAAMI standard test barrel	
Muzzle Energy	320 ft.-lbs.	
Accuracy	2.0" Max. avg. extreme spread @ 25 yards (Three 5 round groups using a universal receiver test system)	
Bullet Performance	4" pistol, 10% ordnance gelatin @ 10 ft., average values Penetration: 12.8 inches Expansion: .66 inch dia. (1.8x) Weight Retention: 100%	

9mm Luger +P	Index Number – GS9MMD	RAMAC – 29424
Primer	5 ½	
Load	+P	
Bullet Weight/Style	124-gr. BJHP	
Jacket Material	Brass (Copper alloy 260)	
Core Material	99.25% Lead, .75% Antimony	
Muzzle Velocity	1180 fps using a 4" SAAMI standard test barrel	
Muzzle Energy	384 ft.-lbs.	
Accuracy	2.0" Max. avg. extreme spread @ 25 yards (Three 5 round groups using a universal receiver test system)	
Bullet Performance	4" pistol, 10% ordnance gelatin @ 10 ft., average values Penetration: 14.3 inches Expansion: .54 inch dia. (1.5x) Weight Retention: 100%	

40 S&W	Index Number – GS40SWA	RAMAC – 29440
Primer	5 ½	
Load	Standard	
Bullet Weight/Style	165-gr. BJHP	
Jacket Material	Brass (Copper alloy 260)	
Core Material	99.25% Lead, .75% Antimony	
Muzzle Velocity	1150 fps using a 4" SAAMI standard test barrel	
Muzzle Energy	485 ft.-lbs.	
Accuracy	2.0" Max. avg. extreme spread @ 25 yards (Three 5 round groups using a universal receiver test system)	
Bullet Performance	4" pistol, 10% ordnance gelatin @ 10 ft., average values Penetration: 14.1 inches Expansion: .60 inch dia. (1.5x) Weight Retention: 100%	

40 S&W	Index Number – GS40SWB	RAMAC – 29442
Primer	5 ½	
Load	Standard	
Bullet Weight/Style	180-gr. BJHP	
Jacket Material	Brass (Copper alloy 260)	
Core Material	99.25% Lead, .75% Antimony	
Muzzle Velocity	1015 fps using a 4" SAAMI standard test barrel	
Muzzle Energy	412 ft.-lbs.	
Accuracy	2.0" Max. avg. extreme spread @ 25 yards (Three 5 round groups using a universal receiver test system)	
Bullet Performance	4" pistol, 10% ordnance gelatin @ 10 ft., average values Penetration: 12.3 inches Expansion: .68 inch dia. (1.7x) Weight Retention: 99.9%	

45 AUTO	Index Number – GS45APA	RAMAC – 29444
Primer	2 ½	
Load	Standard	
Bullet Weight/Style	230-gr. BJHP	
Jacket Material	Brass (Copper alloy 260)	
Core Material	99.25% Lead, .75% Antimony	
Muzzle Velocity	1015 fps using a 5" SAAMI standard test barrel	
Muzzle Energy	423 ft.-lbs.	
Accuracy	2.8" Max. avg. extreme spread @ 50 yards (Three 5 round groups using a universal receiver test system)	
Bullet Performance	5" pistol, 10% ordnance gelatin @ 10 ft., average values Penetration: 14.8 inches Expansion: .60 inch dia. (1.3x) Weight Retention: 100%	

45 AUTO	Index Number – GS45APB	RAMAC – 29448
Primer	2 ½	
Load	Standard	
Bullet Weight/Style	230-gr. BJHP	
Jacket Material	Brass (Copper alloy 260)	
Core Material	100% Lead	
Muzzle Velocity	875 fps using a 5" SAAMI standard test barrel	
Muzzle Energy	391 ft.-lbs.	
Accuracy	2.8" Max. avg. extreme spread @ 50 yards (Three 5 round groups using a universal receiver test system)	
Bullet Performance	5" pistol, 10% ordnance gelatin @ 10 ft., average values Penetration: 15.0 inches Expansion: .71 inch dia. (1.6x) Weight Retention: 100%	

En-gauge and immobilize. For close-range tactical scenarios, Remington® 12 gauge ammunition is a clean sweep. Our selection of street-proven slugs and buckshot has been perfected over decades in the field. We match the finest components with rigid standards for quality control to create the only shotgun loads worthy of a trip down a Remington® tactical shotgun barrel.

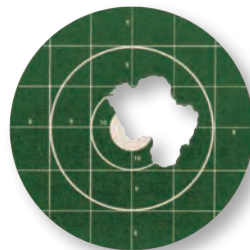
SLUGS 12 GAUGE DUTY SHELLS



12 gauge slugs are available in full power and reduced recoil for duty and training conditions. While the Slugger® Rifled Slugs remain the industry standard, the Reduced Recoil Rifled Slugs generate 45% less recoil than a standard 1-oz. rifled slug. In the field or on the course, Remington® provides the perfect slugs for any shotgun duty use.

REDUCED RECOIL RIFLED SLUGS » Specifically engineered to improve a shooter’s capabilities with a shotgun • Generate 45% less recoil than a standard 1-oz. rifled slug • Helps during training and encourages shotgun duty use • Point-of-Impact is identical to a standard 1-oz. slug out to 50 yards and only 1 ½” lower at 100-yards • High-density polymer alignment disk under the slug’s base produces enhanced accuracy • Waterproof primer for maximum reliability

Reduced Recoil Slug
12 ga., 2 ¾”, 1-oz. slug,
10 shots, 25 yards,
I.C. Choke,
1,200 FPS



COLOR CODE YOUR LOADS » Remington® slug hulls are now offered in optional Peters blue for rapid differentiation from buckshot loads • All buckshot hulls remain in standard “Remington Green” • With this Remington feature, personnel can easily distinguish between slugs and buckshot loads



SLUGGER® RIFLED SLUGS » Larger slug diameter for better gas sealing • High-density polymer disk under the slug produces a perfectly aligned exit from the muzzle for dramatically enhanced accuracy



Full Velocity Slugger
12 ga., 2 ¾”, 1-oz. slug,
10 shots, 25 yards,
I.C. Choke,
1,560 FPS



FRANGIBLE SABOT SLUGS » Reliable lead-free and heavy-metal-free primer • Lead-free slugs produce instant, complete breakup when impacting steel targets and steel backstops • Optimized powder blends for efficient utilization with minimum unburned residue • Accuracy performance nearly equivalent to conventional loads • Slug fragment splash-back virtually eliminated



TACTICAL BUCKSHOT 12 GAUGE DUTY SHELLS

TAC 8® 00-BUCKSHOT »

A full load 8-pellet 00-Buck that boasts a highly concentrated ½” to ¾” per yard pattern spread • Pattern controlled by utilizing 00-buck with 3% antimony lead and a precisely loaded special shot cup • Waterproof primer and mouth for maximum reliability under harsh environmental conditions



1 ROUND OF TAC 8
fired at 15 yards, IC Choke



5 ROUNDS OF TAC 8
fired at 15 yards, IC Choke



FRANGIBLE BUCKSHOT »

Reliable lead-free and heavy-metal-free primer • Lead-free pellets produce instant, complete breakup when impacting steel targets and steel backstops • Optimized powder blends for efficient utilization with minimum unburned residue • Pattern performance nearly equivalent to conventional loads • Shotcup and buffering protect shot for enhanced patterns • Pellet fragment splash-back virtually eliminated



REDUCED-RECOIL

00-BUCKSHOT »

Made specifically for duty and training applications that encourage shotgun usage • Our 8- or 9-pellet Reduced-Recoil 00-Buckshot produces lower felt recoil by 40% for better follow-up shots • Enhanced with Power Piston® shot cup, polymer buffering, and hardened 3% antimony lead pellets contributing to outstanding patterns



BUCKSHOT »

Available in standard and magnum loadings and 5 buckshot sizes: 000, 00, 0, 1 and 4 • Provides reliability, consistency and stopping power • Our 9-pellet 00-Express LE Buckshot created a new standard of pattern performance with the addition of our one-piece compression section Power Piston® wad column, polymer buffering and hard lead pellets • This combination produces patterns 25% tighter than previous buckshot offerings



TB12 BREACHING ROUND

TB12

TB12 is a mission-specific shotgun ballistic breaching round used to defeat a variety of urban structures to include exterior and interior doors. TB12 provides a dramatic reduction in collateral damage to non-combatants as well as operators through the use of a frangible material that delivers maximum energy to the breach point yet turns to a near harmless powder upon impact. TB12 is a cost-effective training and operational breaching round allowing operators to “train as they fight.” The frangible property of TB12 delivers near-threat lethality in addition to being a superb breaching round, ensuring that the breacher remains operational regardless of the weapon system being used.



REMINGTON® CENTERFIRE RIFLE CARTRIDGE (Packed 20 rounds per box, 10 boxes per case, 200 rounds per case)

REMINGTON® CENTERFIRE RIFLE CARTRIDGE											*ZERO* INDICATES YARDAGE AT WHICH RIFLE WAS SIGHTED IN. Bullet does not rise more than 1" above line of sight from muzzle to sighting-in range.									
Caliber	Index IDI No.	Ramac No.	Primer No.	Wt. (g.)	Bullet Style	VELOCITY (ft./sec.)			ENERGY (ft.lbs.)			SHORT-RANGE TRAJECTORY						Ballistic Coefficient		
						Muzzle	100 yds.	200 yds.	Muzzle	100 yds.	200 yds.	50 yds.	100 yds.	150 yds.	200 yds.	250 yds.	300 yds.			
223 Remington	PRA223RB	29184	7 ½	50	AccuTip, Boat Tail	3410	2989	2605	1291	992	753	-0.1	0.4	ZERO	-1.5	-4.4	-8.7	0.242		
	PRA223RC	29192	7 ½	55	AccuTip, Boat Tail	3240	2854	2500	1282	995	763	0.2	0.6	ZERO	-1.8	-5.1	-9.9	0.255		
	R223R1	28399	7 ½	55	PSP	3240	2747	2304	1282	921	648	0.0	0.6	ZERO	-2.0	-5.6	-11.2	0.197		
	R223R2	29047	7 ½	55	HP, Power-Lokt	3240	2773	2352	1282	939	675	0.0	0.6	ZERO	-1.9	-5.4	-10.7	0.209		
	R223R3	28401	7 ½	55	Metal Case	3240	2759	2326	1282	929	660	0.0	0.6	ZERO	-1.9	-5.5	-11.0	0.202		
	R223R6	22106	7 ½	62	HP (Match)	3025	2572	2162	1260	911	643	0.2	0.7	ZERO	-2.3	-6.5	-12.9	0.205		
	RM223R1	27680	7 ½	69	BTHP (Match)	3000	2720	2457	1379	1133	925	0.1	0.6	ZERO	-1.9	-5.3	-10.3	0.336		
	RM223R3	27686	7 ½	77	BTHP (Match)	2800	2551	2314	1340	1112	916	0.3	0.8	ZERO	-2.3	-6.2	-11.8	0.375		
6.8mm Remington SPC	R68R1	29146	9 ½	115	OT (Match)	2625	2373	2135	1759	1437	1163	0.4	1.0	ZERO	-2.7	-7.3	-14.1	0.344		
	RM68R1	27676	9 ½	115	BTHP (Match)	2625	2365	2119	1759	1428	1147	0.5	1.0	ZERO	-2.7	-7.4	-14.3	0.333		
	PRC68R4	29128	9 ½	115	Core-Lokt Ultra Bonded	2625	2332	2058	1759	1389	1082	0.5	1.0	ZERO	-2.8	-7.8	-15.0	0.295		
308 Win.	PRSC308WA	29334	9 ½	150	Swift Scirocco Bonded	2820	2611	2410	2648	2269	1935	0.0	ZERO	-1.1	-3.6	-7.6	-13.2	0.435		
	R308W1	27842	9 ½	150	PSP, Core-Lokt	2820	2533	2263	2648	2137	1705	0.0	ZERO	-1.2	-3.9	-8.4	-14.7	0.314		
	PRSC308WB	29332	9 ½	165	Swift Scirocco Bonded	2700	2513	2333	2670	2313	1994	0.0	ZERO	-1.3	-4.0	-8.4	-14.4	0.475		
	RM308W7	21485	9 ½	168	BTHP (Match)	2680	2493	2314	2678	2318	1998	-0.1	ZERO	-1.3	-4.1	-8.5	-14.7	0.475		
	RM308W8	21486	9 ½	175	BTHP (Match)	2610	2421	2241	2647	2278	1951	0.4	0.9	ZERO	-2.5	-6.8	-13.0	0.496		
	PRC308WC	29116	9 ½	180	Core-Lokt Ultra Bonded	2620	2404	2198	2743	2309	1930	0.0	ZERO	-1.4	-4.5	-9.4	-16.3	0.402		
	R308W3	21479	9 ½	180	PSP, Core-Lokt	2620	2393	2178	2743	2288	1896	0.0	ZERO	-1.5	-4.6	-9.5	-16.5	0.383		
30-06 Sprg.	PRSC3006C	29318	9 ½	150	Swift Scirocco Bonded	2910	2696	2492	2820	2421	2069	0.1	0.7	ZERO	-2.0	-5.3	-10.2	0.435		
	R30062	27826	9 ½	150	PSP, Core-Lokt	2910	2617	2342	2820	2281	1827	0.2	0.7	ZERO	-2.2	-5.9	-11.4	0.314		
	R30063	21405	9 ½	150	BRPT	2910	2656	2416	2820	2349	1944	0.2	0.7	ZERO	-2.0	-5.6	-10.8	0.365		
	R3006B	21415	9 ½	165	PSP, Core-Lokt	2800	2534	2283	2872	2352	1909	0.3	0.8	ZERO	-2.3	-6.3	-12.1	0.339		
	PRC3006B	29008	9 ½	168	Core-Lokt Ultra Bonded	2800	2546	2306	2924	2418	1984	0.3	0.8	ZERO	-2.3	-6.2	-11.9	0.356		
	PRC3006C	29004	9 ½	180	Core-Lokt Ultra Bonded	2700	2480	2270	2913	2457	2059	0.0	ZERO	-1.3	-4.2	-8.7	-15.1	0.402		
	PRSC3006B	29328	9 ½	180	Swift Scirocco Bonded	2700	2522	2351	2913	2542	2208	0.0	ZERO	-1.3	-4.0	-8.3	-14.2	0.500		
	R30064	21407	9 ½	180	SP, Core-Lokt	2700	2348	2023	2913	2203	1635	0.0	ZERO	-1.5	-4.9	-10.3	-18.3	0.248		
	R30065	27828	9 ½	180	PSP, Core-Lokt	2700	2469	2250	2913	2436	2023	0.0	ZERO	-1.3	-4.2	-8.8	-15.4	0.383		
	R30067	27830	9 ½	220	SP, Core-Lokt	2410	2130	1870	2837	2216	1708	0.1	ZERO	-2.0	-6.2	-12.9	-22.4	0.294		
300 Remington SA Ultra Mag.	PR300SM1	27952	9 ½ M	150	PSP, Core-Lokt Ultra	3200	2901	2622	3410	2803	2290	0.1	0.5	ZERO	-1.6	-4.6	-8.9	0.330		
	PR300SM2	27954	9 ½ M	165	SP, Core-Lokt Ultra	3075	2792	2527	3464	2856	2339	0.1	0.6	ZERO	-1.8	-5.0	-9.7	0.339		
300 Win. Mag.	R300W1	29495	9 ½ M	150	PSP, Core-Lokt	3290	2950	2634	3605	2897	2311	0.0	0.5	ZERO	-1.6	-4.4	-8.7	0.294		
	PRC300WA	29034	9 ½ M	150	Core-Lokt Ultra Bonded	3290	2967	2666	3605	2931	2366	-0.1	0.5	ZERO	-1.6	-4.3	-8.5	0.310		
	PRSC300WB	29330	9 ½ M	180	Swift Scirocco Bonded	2960	2274	2595	3501	3075	2692	0.1	0.6	ZERO	-1.8	-4.9	-9.4	0.507		
	PRC300WC	29032	9 ½ M	180	Core-Lokt Ultra Bonded	2960	2774	2505	3501	2971	2508	0.1	0.6	ZERO	-1.9	-5.2	-10.0	0.402		
	PRA300WC	29212	9 ½ M	180	AccuTip, Boat Tail	2960	2764	2577	3501	3053	2653	0.1	0.6	ZERO	-1.8	-4.9	-9.5	0.481		
	R300W2	29497	9 ½ M	180	PSP, Core-Lokt	2960	2715	2482	3501	2945	2463	0.1	0.6	ZERO	-1.9	-5.3	-10.2	0.383		
	RM300W7	27684	9 ½ M	190	BTHP (Match)	2900	2725	2557	3547	3133	2758	0.1	0.6	ZERO	-1.9	-5.1	-9.8	0.533		
7mm Rem. Mag.	PRA7MMRB	29206	9 ½ M	150	AccuTip, Boat Tail	3110	2926	2749	3221	2850	2516	0.0	0.5	ZERO	-1.6	-4.3	-8.2	0.530		
	R7MM2	29487	9 ½ M	150	PSP, Core-Lokt	3110	2830	2568	3221	2667	2196	0.0	0.6	ZERO	-1.7	-4.8	-9.3	0.346		
	RS7MMA	27893	9 ½ M	160	PSP, A-Frame	2900	2659	2430	2987	2511	2097	0.2	0.7	ZERO	-2.0	-5.5	-10.7	0.382		
	R7MM3	27814	9 ½ M	175	PSP, Core-Lokt	2860	2645	2440	3178	2718	2313	0.2	0.7	ZERO	-2.1	-5.6	-10.7	0.427		
	PRSC7MMB	29316	9 ½ M	150	Swift Scirocco	3110	2927	2751	3221	2852	2520	0.0	0.5	ZERO	-1.6	-4.3	-8.2	0.533		
	PRC7MMRC	28980	9 ½ M	160	Core-Lokt Ultra Bonded	2950	2724	2510	3091	2636	2237	0.1	0.6	ZERO	-1.9	-5.2	-10.0	0.415		
338 Lapua Magnum	RM338LMR1	27944	9 ½ M	250	Scenar	2960	2820	2683	4863	4412	3996	0.3	0.6	ZERO	-1.7	-4.7	-8.9	0.675		

Bullet Style Descriptions: OT=Open Tip / BTHP=Boat Tail Hollow Point / BRPT=Bronze Point / HP=Hollow Point / MC=Metal Case / PSP=Pointed Soft Point / SP=Soft Point

UMC® CENTERFIRE RIFLE CARTRIDGE (Packed 20 rounds per box, 10 boxes per case, 200 rounds per case)

Caliber	Index IDI No.	Ramac No.	Primer No.	Wt. (g.)	Bullet Style	VELOCITY (ft./sec)			ENERGY (ft./lbs.)			SHORT-RANGE TRAJECTORY						Ballistic Coefficient
						Muzzle	100 yds.	200 yds.	Muzzle	100 yds.	200 yds.	50 yds.	100 yds.	150 yds.	200 yds.	250 yds.	300 yds.	
223 Remington	L223R7	23748	7 ½	45	Jacketed Hollow Point	3550	2953	2430	1259	871	590	-0.1	0.4	ZERO	-1.7	-4.8	-9.7	0.173
	L223R8	23812	7 ½	50	Jacketed Hollow Point	3425	2899	2430	1302	933	655	-0.1	0.5	ZERO	-1.7	-4.9	-9.9	0.192
	L223R3	23711	7 ½	55	Metal Case	3240	2759	2326	1282	929	660	0.0	0.6	ZERO	-1.9	-5.5	-11.0	0.202
	L223R3L1	23894	7 ½	55	Metal Case	3240	2993	2759	1282	1094	930	-0.1	0.6	ZERO	-1.9	-5.5	-11.0	0.202
	L223R9	23815	7 ½	62	Closed Tip Flat Base	3100	2734	2396	1323	1029	790	0.1	0.6	ZERO	-1.9	-5.4	-10.6	0.260
	L308W4	23715	9 ½	150	Metal Case	2820	2533	2263	2648	2137	1705	-0.1	ZERO	-1.2	-3.9	-8.4	-14.7	0.314
6.8mm Remington SPC	L68R2	24035	9 ½	115	MC	2625	2329	2053	1759	1385	1076	0.5	1.0	ZERO	-2.9	-7.8	-15.1	0.292
	L762391	23709	7 ½	123	Metal Case	2365	2060	1780	1527	1159	865	0.1	ZERO	-2.2	-6.8	-14.1	-24.5	0.266

1 Linked in 100 Round Belt, 5 Belts Per Case, 500 Rounds Per Case.

REMINGTON® DUTY SLUG SHELLS

ZERO INDICATES YARDAGE AT WHICH RIFLE WAS SIGHTED IN. Bullet does not rise more than 1" above line of sight from muzzle to sighting-in range.										
Loads	Index IDI No.	Ramac No.	Gauge	Shell Length (in.)	Velocity (ft/sec)	Number of Pellets	Slug Weight	Rounds per Box	Boxes per Case	Rounds per Case
Sluggert® Rifled Slug	SP12RS	20300	12	2 ¾	1560	—	1 oz. Rifled Slug	5	50	250
	SP12RSB(Blue Hull)	20279	12	2 ¾	1560	—	1 oz. Rifled Slug	5	50	250
	S12SRS	20302	12	2 ¾	1680	—	1 oz. Rifled Slug	5	50	250
	S12MRS	20270	12	3	1760	—	1 oz. Rifled Slug	5	50	250
Reduced Recoil Rifled Slug	RR12RSB(Blue Hull) ¹	20285	12	2 ¾	1200	—	1 oz. Rifled Slug	5	50	250

1 May not function in all types of autoloading shotguns.

REMINGTON® DUTY BUCKSHOT SHELLS

Loads	Index IDI No.	Ramac No.	Gauge	Shell Length (in.)	Dram Equiv.	Velocity (ft/sec)	Number of Pellets	Slug Weight	Rounds per Box	Boxes per Case	Rounds per Case
Reduced Recoil Buckshot	RR12BK00	20643	12	2 3/4	3	1200	9	00 Buck	25	10	250
	RR128B00	20645	12	3	2 3/4	1200	8	00 Buck	25	10	250
Buckshot	12B000	20406	12	2 3/4	3 3/4	1325	8	000 Buck	5	50	250
	12B00	20620	12	2 3/4	3 3/4	1325	9	00 Buck	5	50	250
	12B0	20622	12	2 3/4	3 3/4	1275	12	0 Buck	5	50	250
	12B1	20624	12	2 3/4	3 3/4	1250	16	1 Buck	5	50	250
	12B4	20626	12	2 3/4	3 3/4	1325	27	4 Buck	5	50	250
Law Enforcement Buckshot	SPL1200	20812	12	2 3/4	3 3/4	1325	9	00 Buck	25	10	250
Magnum Buckshot	12SB00	20632	12	2 3/4	4	1290	12	00 Buck	5	50	250
	12HB000	20408	12	3	4	1225	10	000 Buck	5	50	250
	12HB00	20636	12	3	4	1225	15	00 Buck	5	50	250
	12HB4	20640	12	3	4	1225	41	4 Buck	5	50	250
TAC® 8 Buckshot	12BT800	20662	12	2 3/4	3 3/4	1325	8	00 Buck	5	50	250

GOLDEN SABER® BONDED HPJ (HIGH-PERFORMANCE JACKET) (Packed 50 rounds per box, 10 boxes per case, 500 rounds per case)

Caliber	Index (DI No.	Ramac No.	Primer No.	Wt. (g.)	Bullet Style	VELOCITY (ft/sec)			ENERGY (ft.lbs.)			MID-RANGE TRAJECTORY (inch)		
						Muzzle	25 yds.	50 yds.	Muzzle	25 yds.	50 yds.	25 yds.	50 yds.	50 yds.
357 SIG	GSB37SB	29408	5 ½	125	Brass-Jacketed Hollow Point, Bonded	1350	1245	1157	506	430	372	0.2		0.7
9mm Luger (+P) ¹	GSB9MMD	29351	1 ½	124	Brass-Jacketed Hollow Point, Bonded (+P) ²	1180	1131	1089	384	352	327	0.2		0.8
	GSB9MMC	29353	1 ½	147	Brass-Jacketed Hollow Point, Bonded	990	965	941	320	304	289	0.3		1.1
40 S&W	GSB40SWA	29366	5 ½	165	Brass-Jacketed Hollow Point, Bonded	1150	1089	1040	484	435	396	0.2		0.9
	GSB40SWB	29368	5 ½	180	Brass-Jacketed Hollow Point, Bonded	1015	986	960	412	388	368	0.3		1.1
45 Auto	GSB45APA	29414	2 ½	185	Brass-Jacketed Hollow Point, Bonded	1015	981	951	423	395	371	0.3		1.1
	GSB45APB	29378	2 ½	230	Brass-Jacketed Hollow Point, Bonded	875	853	833	391	372	354	0.4		1.5

1 Ammunition with "+P" or "+P+" on the case headstamp is loaded to higher pressure. Use only in firearms designated for this cartridge and so recommended by the gun manufacturer.

GOLDEN SABER® HPJ (HIGH-PERFORMANCE JACKET) (Packed 25 rounds per box, 20 boxes per case, 500 rounds per case)

Caliber	Index (DI No.	Ramac No.	Primer No.	Wt. (g.)	Bullet Style	VELOCITY (ft/sec)			ENERGY (ft.lbs.)			MID-RANGE TRAJECTORY (inch)		
						Muzzle	25 yds.	50 yds.	Muzzle	25 yds.	50 yds.	25 yds.	50 yds.	50 yds.
357 Mag. ¹	GS357MA	29400	5 ½	125	Brass-Jacketed Hollow Point	1220	1152	1095	413	368	333	0.2		0.8
9mm Luger	GS9MMB	29420	1 ½	124	Brass-Jacketed Hollow Point	1125	1074	1031	349	317	293	0.2		0.9
	GS9MMD	29424	1 ½	124	Brass-Jacketed Hollow Point (+P) ¹	1180	1131	1089	383	352	326	0.2		0.8
	GS9MMC	29422	1 ½	147	Brass-Jacketed Hollow Point	990	965	941	320	304	289	0.3		1.1
380 Auto	GS380B	29410	1 ½	102	Brass-Jacketed Hollow Point	940	920	901	200	192	184	0.3		1.4
38 Special ¹	GS38SB	29432	1 ½	125	Brass-Jacketed Hollow Point (+P) ²	975	950	929	264	250	238	0.3		1.3
40 S&W	GS40SWA	29440	5 ½	165	Brass-Jacketed Hollow Point	1150	1089	1040	485	435	396	0.2		0.9
	GS40SWB	29442	5 ½	180	Brass-Jacketed Hollow Point	1015	986	960	412	388	368	0.3		1.1
45 Auto	GS45AP	29444	2 ½	185	Brass-Jacketed Hollow Point	1015	981	951	423	395	371	0.3		1.1
	GS45APB	29448	2 ½	230	Brass-Jacketed Hollow Point	875	853	833	391	372	355	0.4		1.5
	GS45APC	29450	2 ½	185	Brass-Jacketed Hollow Point (+P) ²	1140	1086	1041	534	484	445	0.2		0.9

1 Note: These ballistics reflect vented barrel. 2 Ammunition with "+P" or "+P+" on the case headstamp is loaded to higher pressure. Use only in firearms designated for this cartridge and so recommended by the gun manufacturer.

UMC® CENTERFIRE PISTOL & REVOLVER AMMUNITION (Packed 50 rounds per box, 10 boxes per case, 500 rounds per case)

Caliber	Index (DI No.	Ramac No.	Primer No.	Wt. (g.)	Bullet Style	VELOCITY (ft/sec)			ENERGY (ft.lbs.)			MID-RANGE TRAJECTORY (in.)		
						Muzzle	25 yds.	50 yds.	Muzzle	25 yds.	50 yds.	25 yds.	50 yds.	50 yds.
25 Auto Pistol (6.35mm)	L25AP	23716	1 ½	50	Metal Case	760	733	707	64	60	56	0.5		2.0
32 Auto (7.65mm)	L32AP	23704	1 ½	71	Metal Case	905	879	854	129	122	115	0.4		1.7
357 Magnum ¹	L357M12	23738	5 ½	125	Jacketed Soft Point	1450	1338	1240	583	497	427	0.1		0.6
9mm Luger	L9MM1	23752	1 ½	115	Jacketed Hollow Point	1155	1095	1046	341	306	280	0.2		0.9
	L9MM3	23728	1 ½	115	Metal Case	1135	1084	1041	329	300	277	0.2		0.9
	L9MM2	23718	1 ½	124	Metal Case	1100	1067	1030	339	314	292	0.2		1.0
380 Auto	L9MM9	23732	1 ½	147	Metal Case	990	965	941	320	304	289	0.3		1.1
	L380AP	23720	1 ½	95	Metal Case	955	904	860	192	172	156	0.3		1.3
	L38SUP	23722	1 ½	130	Metal Case	1215	1152	1099	426	383	348	0.2		0.8
38 Special ¹ (+P) ²	L38S2	23754	1 ½	125	Semi-Jacketed Hollow Point (+P) ²	945	921	898	248	235	224	0.3		1.3
38 Special	L38S5	23724	1 ½	158	Lead Round Nose	755	739	723	200	191	183	0.5		2.1
	L38S11	23730	1 ½	130	Metal Case	800	787	775	185	179	173	0.3		1.7
	L10MM6	23706	2 ½	180	Metal Case	1150	1103	1063	528	486	451	0.2		0.9
357 SIG	L357S1	23734	5 ½	125	Metal Case	1350	1238	1146	506	425	365	0.2		0.7
	L357S2	23692	5 ½	125	Jacketed Hollow Point	1350	1245	1157	506	430	372	0.2		0.7
40 S&W	L40SW2	23694	5 ½	180	Jacketed Hollow Point	1015	986	960	412	388	368	0.3		1.1
	L40SW3	23742	5 ½	180	Metal Case	985	959	935	388		350	0.3		1.2
	L40SW4	23746	5 ½	165	Metal Case	1150	1089	1040	484	435	396	0.2		0.9
44 Remington Magnum ¹	L44MG7	23744	2 ½	180	Jacketed Soft Point	1610	1482	1366	1036	878	745	0.1		0.5
45 Auto	L45AP1	23818	2 ½	185	Metal Case	1015	981	951	423	395	371	0.3		1.1
	L45AP4	23726	2 ½	230	Metal Case	835	817	800	356	341	326	0.4		1.6
	L45AP7	23696	2 ½	230	Jacketed Hollow Point	835	817	800	356	341	326	0.4		1.6
45 GAP	L45GAP4	23691	2 ½	230	Metal Case	880	860	841	395	378	361	0.4		1.5

1 Note: These ballistics reflect vented barrel. 2 Ammunition with "+P" on the case headstamp is loaded to higher pressure. Use only in firearms designated for this cartridge and so recommended by the gun manufacturer.

REMINGTON® PISTOL AND REVOLVER DUTY AMMUNITION (Packed 50 rounds per box, 10 boxes per case, 500 rounds per case)

Caliber	Index (DI No.	Ramac No.	Primer No.	Wt. (g.)	Bullet Style	VELOCITY (ft/sec)			ENERGY (ft.lbs.)			MID-RANGE TRAJECTORY (inch)		
						Muzzle	25 yds.	50 yds.	Muzzle	25 yds.	50 yds.	25 yds.	50 yds.	50 yds.
32 S&W	R32SW	22204	1 ½	88	Lead	680	645	610	90	81	73	0.6		2.5
32 S&W Long	R32SWL	22208	1 ½	98	Lead	705	670	635	115	98	88	0.6		2.3
	R32AP	22212	1 ½	71	Metal Case	905	855	810	129	115	97	0.4		1.4
357 Mag. ¹	R357M7	22228	5 ½	110	Semi-Jacketed Hollow Point	1295	1094	975	410	292	232	0.2		0.8
	R357M1	22216	5 ½	125	Semi-Jacketed Hollow Point	1450	1240	1090	583	427	330	0.1		0.6
	R357M2	22218	5 ½	158	Semi-Jacketed Hollow Point	1235	1104	1015	535	428	361	0.2		0.8
	R357M3	22220	5 ½	158	Soft Point	1235	1104	1015	535	428	361	0.2		0.8
	R357M5	22224	5 ½	158	Semi-Wadcutter	1235	1104	1015	535	428	361	0.2		0.8
	RH357MA	29466	5 ½	165	Jacketed Hollow Point Core-Lokt	1290	1237	1189	610	561	518	0.2		0.7
9mm Luger	R357M10	22234	5 ½	180	Semi-Jacketed Hollow Point	1145	1053	985	524	443	388	0.2		0.9
	R9MM1	28285	1 ½	115	Jacketed Hollow Point	1155	1047	971	341	280	241	0.9		3.9
	R9MM3	28290	1 ½	115	Metal Case	1135	1041	973	329	277	242	0.9		4.0
	R9MM6	28289	1 ½	115	Jacketed Hollow Point (+P) ²	1250	1113	1019	399	316	265	0.2		0.8
	RB9MM6	28324	1 ½	115	Jacketed Hollow Point, Bonded (+P) ²	1250	1175	1113	399	353	316	0.2		0.8
	R9MM2	22240	1 ½	124	Metal Case	1110	1030	971	339	292	259	0.2		0.9
380 Auto	R9MM8	28299	1 ½	147	Jacketed Hollow Point (Subsonic)	990	941	900	320	289	264	0.3		1.1
	R380A1	22246	1 ½	88	Jacketed Hollow Point	990	920	868	191	165	146	0.3		1.2
	R380AP	22252	1 ½	95	Metal Case	955	865	785	190	160	130	0.3		1.4
38 S&W	R38SW	22276	1 ½	146	Lead Round Nose	685	650	620	150	135	125	0.6		2.5
38 Special ¹	R38S10	22298	1 ½	110	Semi-Jacketed Hollow Point (+P) ²	995	926	871	242	210	185	0.3		1.2
	R38S16	22310	1 ½	110	Semi-Jacketed Hollow Point	950	890	840	220	194	172	0.3		1.3
	R38S2	22282	1 ½	125	Semi-Jacketed Hollow Point (+P) ²	945	898	858	248	224	204	0.3		1.3
	R38S3	22284	1 ½	148	Targetmaster® Lead WC Match	710	634	566	166	132	105	0.6		2.4
	R38S5	22288	1 ½	158	Lead Round Nose	755	723	692	200	183	168	0.5		2.1
	R38S14	22304	1 ½	158	Semi-Wadcutter (+P) ²	890	855	823	278	257	238	0.3		1.4
	R38S6	22290	1 ½	158	Semi-Wadcutter	755	723	692	200	183	168	0.5		2.1
	R38S12	22300	1 ½	158	Lead Hollow Point (+P) ²	890	855	823	278	257	238	0.3		1.4
357 SIG	R357S1	22258	5 ½	125	Jacketed Hollow Point	1350	1245	1157	506	430	372	0.2		0.7
40 S&W	R40SW1	28347	5 ½	155	Jacketed Hollow Point	1205	1095	1017	499	413	356	0.2		0.8
	R40SW2	28353	5 ½	180	Jacketed Hollow Point	1015	960	914	412	368	334	0.3		1.1
	R40SW5	28799	5 ½	155	Metal Case	1205	1134	1076	500	443	399	0.2		0.8
45 Auto	R45C	28490	2 ½	250	Lead Round Nose	860	820	780	410	375	340	0.4		1.6
	R45AP2	21456	2 ½	185	Jacketed Hollow Point	1000	939	889	411	362	324	0.3		1.1
	R45AP7	21469	2 ½	230	Jacketed Hollow Point (Subsonic)	835	800	767	356	326	300	0.4		1.6
	R45AP4	21448	2 ½	230	Metal Case	835	800	767	356	326	300	0.4		1.6

1 Note: These ballistics reflect vented barrel. 2 Ammunition with "+P" or "+P+" on the case headstamp is loaded to higher pressure. Use only in firearms designated for this cartridge and so recommended by the gun manufacturer.

300, ADL Accelerator, BDL, Bandit, Bore, BrileBore, Bronze Point, BuckHammer, Bullet, CBEE 22, CDL, Classic, Conquest, Copper-Lokt, Copper Solid, Core-Lokt, Custom Carry, Cyclone, D-Series, Deer Hunter, Disintegrator, DrILube, Driving Band, Duplex, Echo, Elite Hunter, ETA, EtronX, Excursion, Express, Express-Steel, EZ, F.A.S.T., Fast Action Soft Touch, Fieldmaster, Figure 8, Fireball, Flexitab, G3, Gamemaster, Genesis, Green Color, Golden Saber, Grizzly, Gun Club, Hi-Speed, Ideal, Kleanbore, Lead-Lokt, LV SF, M24, M24A2, M24A